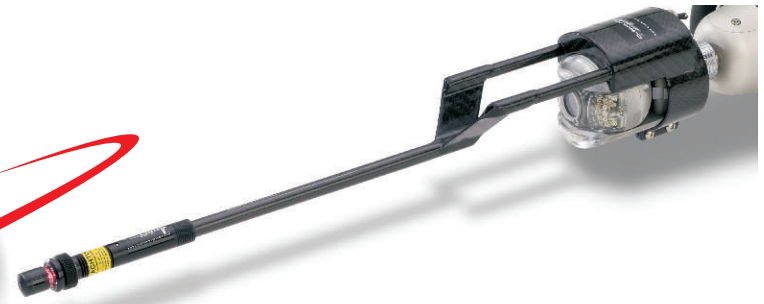


# LASER PIPE PROFILING

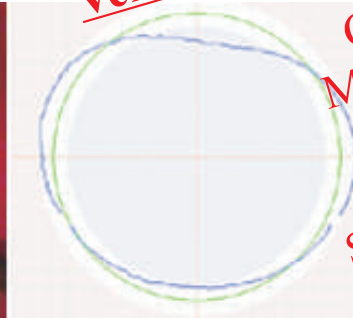
## Capture Internal Pipeline Geometry



In dry pipes, Laser Profiler allows you to get extremely accurate pipeline measurements. The system projects a laser ring on the pipe wall which is recorded for data analysis. A sophisticated suite of software tools is available for R&R Visual technicians to work with the data we capture to give you exactly what you need. This tool is perfect for testing deflection or erosion in new and old pipes.

### Structural Pipe Integrity Analysis

- 1 million measurements every 4 min.
- 6-160" diameter Inspections
- Free Viewer Software
- Supports Various Pipe Shapes
- Built-In Observations Report
- Flat, Un-Folded Report
- Automatic Debris Calculator
- Exports to Standard Modeling Formats
- 3000 ft. per page Reporting



**Verification and Measurement of:**  
Ovality  
Corrosion  
Material Loss  
Diameter  
Build up  
Sediment Depth  
Life Expectancy



**International Inspection Service Provider**

*Municipal, Industrial, Nuclear, Petrochemical Experts*

**CALL US WITH YOUR EMERGENCY - WE RESPOND IMMEDIATELY!**

**www.seepipe.com (800) 776-5653**